

WARRANTY

Is very much a part of customer service because if you should have any concerns about your building purchase this is where you should start investigating. Having knowledgeable customer service representatives is only the beginning. In addition to the 40 year paint, the 25 year galvalume rust through, the stainless steel fastener warranties discussed; your building also comes with a 1 year workmanship warranty on welds and materials and a lifetime snow and wind load warranty. With fully integrated plants and engineering we can provide you with an unlimited time frame on the entire steel structure being designed to the snow and wind load requirements requested on your contract for a lifetime of use with these warranties being passed directly to the end customer.

COMPETITION: Wood frame competitors usually only have a 5 year warranty on wind and a 5-20 year pro-rated warranty that reduces each year on snow and wind (even though most collapses from snow are credited to wind) and a 10 year warranty on paint. This results in significantly higher insurance cost. The broker and “frame shop” competitors, which are not integrated plants, can not very realistically warranty a complete building due to the fact that they provide components and engineering from so many different vendors that determining who warranties the entire building is extremely difficult compared to when your building is designed, engineered and fabricated under strict guidelines from our engineering and quality control teams.

ENGINEERING & DESIGN

Armor Steel Buildings are manufactured in fully integrated Plants where practically all components are designed, engineered and fabricated under the supervision of some of the most experienced engineering staff in the industry. Our engineering staff alone has over 50 years experience in pre-engineered buildings and are Engineer Certificated in all 50 states and most Canadian providences. This provides you with the ability to receive the most complex buildings, completely designed, engineered, manufactured and delivered directly to your job site.

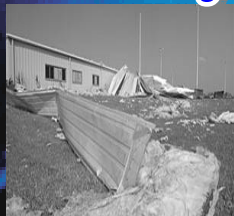
Building Collapse Due to Snow

March 2003—Denver, CO Area
6-7 Feet of Snow in Some Areas

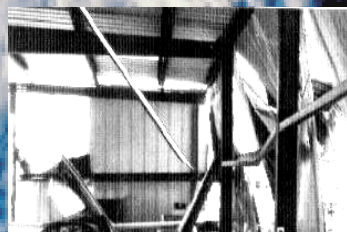


Building Collapse Due to Wind

Hurricanes



Many Competitors use 50,000 PSI, 29-26 gauge panels that are only 38-41 inches wide which may allow as low as only a 3/4" deep corrugation. This soft tensile strength, thinner, shallow corrugation and narrow material allows for a much weaker panel and does not provide the PBR panel on both the walls and roof. These low quality factors allow the holes around the fasteners to become enlarged due to vibration and "humming" when the panels are put under pressure from wind and snow and may eventually cause leakage, or in severe weather may cause the panel to fail which allows the entire building to twist and strip the panels from the building like peeling a banana.



NASA

for a point load of approximately 500-1000 pounds of temporary lift from the beams when the beams are not under a snow or wind load stress.

COMPETITION:

Many competitors design the building to the lowest possible minimums and some do not have them fabricated to any specific design loads at all. Others simply put into your contract that the owner is responsible for re-moving any snow from the roof which could allow them to not design the beams or building for any snow load at all since you would be responsible for climbing up on the roof and shoveling the snow off. (See photo Right)

COATINGS

To provide the highest quality product available your color coated panels have two coatings. The coils the panels are made using an AZ55 Galvalume coating which is 55% aluminum, 45% zinc, and has a 25-year rust through perforation warranty by the steel mill. In addition, color coated panels have an additional coating over the top of the galvalume coating that carries a 30 year coating warranty against chipping, cracking, peeling and blistering of the paint. (See certificate)

COMPETITION: While some competitors provide only a galvanized coating that comes with a 1-year warranty, most competitors provide the patented galvalume coating. However, many only provide a 20 year warranty on the color coating and some provide only five or ten year paint warranties unless you demand the higher quality. This is the reason that many competitors leave off any reference to coating warranties on their quotes. (Be sure to always ask for certificates of warranties)

COMPETITION: Many competitors are brokers who have no equipment and simply purchase components to make steel buildings from many different suppliers and then sell steel building parts that have not been engineered. Others pay an independent drafting firm to produce "plans" then pay an independent engineer to stamp the plans, who is not involved with the company that supplies the parts, let alone who oversees design, engineering and fabrication. Other small manufactures simply have the basic hand or portable mig welding machines to make only the beams. These "frame shops" also do not oversee the design, engineering and fabrication of the entire building, but purchase all other items required to produce your building from outside steel suppliers and usually have these components shipped by the supplier to you with out ever checking the quality or quantity.

e Engineered design has a "safety" factor designed into the strength of the beams for snow and wind load that usually exceeds the minimum allowed design by 5-20%. This additional strength designed into the beams may cost more but gives you the peace of mind that your main structural support was not designed to the lowest possible minimum and as a result allows

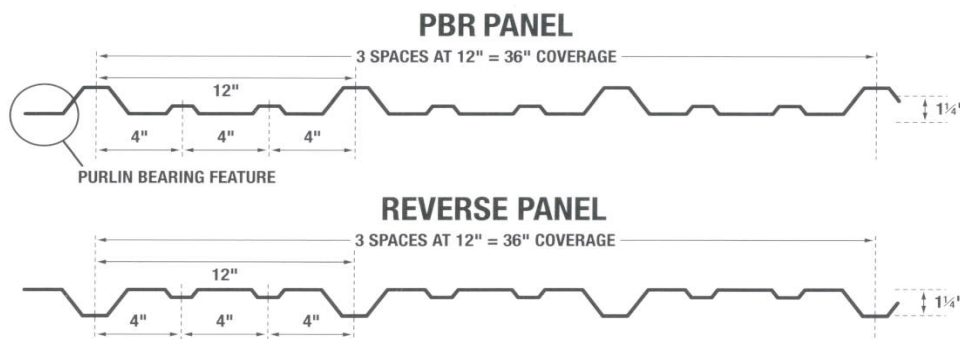
Superior coatings coupled with reliable product engineering provide excellence in building system construction solutions.

Ceram-A-Star® 1050 Panel Colors

The next generation silicone-polyester Cool Chemistry® coating system is here! Engineered by Akzo Nobel Coatings Inc.* to provide a 40-year film integrity warranty against peeling, flaking or loss of adhesion, these coatings also offer high solar reflectivity in medium and dark colors. The CERAM-A-STAR1050 coatings dramatically reduce energy consumption and associated costs especially in hot, sunny climates.

CERAM-A-STAR1050 outperforms similar coatings based on real-world exposure testing in South Florida. Its use of proprietary resin technology and ceramic pigments provide exceptional exterior durability as well as energy savings. It is available in a full spectrum of colors with a 30-year performance warranty covering chalking and fading. Coatings accommodate "cool" technology and "green building" compliance.

* Akzo Nobel Coatings Inc. produces coatings recognized as the highest quality in the industry. Adhering to tight quality control procedures, they meet and exceed specifications and standards set forth by the American Society for Testing and Material (ASTM) and ISO 9001 certification.



26 Gauge Stock Colors with Trim Available in all Colors

Standing seam available in two colors – White and Galvalume®

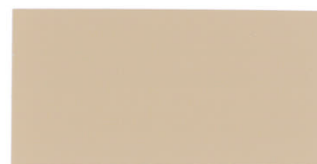
Actual color may vary slightly from color samples shown. If color choice is critical, request a color sample. Because of changing trends in color popularity, the colors illustrated are subject to change without notice.



BRITE RED TSR 0.34



RUSTIC RED TSR 0.27



SAHARA TAN TSR 0.51



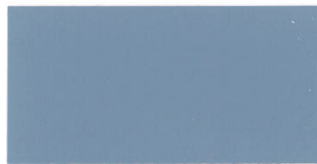
LIGHTSTONE TSR 0.60



COLONY GREEN TSR 0.35



FERN GREEN TSR 0.30



HAWAIIAN BLUE TSR 0.33



GALLERY BLUE TSR 0.25

© 2007 Interactive Enterprises Corporation



Film Properties	Test Methods & Descriptions	CERAM-A-STAR®1050	
SUBSTRATE		Hot Dipped Galvanized Galvan & Galvalume®	Aluminum
Dry Film Thickness:	ASTM ¹ D1400, D1005, D4138 (NCCA ² II-13,14,15)	0.20 - 0.25 Mils Primer 0.70 - 0.90 Mils Topcoat	0.20 - 0.25 Mils Primer 0.70 - 0.90 Mils Topcoat
PHYSICAL PROPERTIES			
60° Specular Gloss:	ASTM D523	35%	35%
Pencil Hardness:	ASTM D3363 (NCCA II - 12) Eagle Turquoise Pencil	"F" - Minimum	"F" - Minimum
Flexibility: T-Bend Mandrel Bend	NCCA II - 9 ASTM D522 180° bend around 1/8" mandrel	2T - No Tape-Off No Tape Off	2T - No Tape-Off No Tape Off
Adhesion:	ASTM D3359 (NCCA II - 5) Reverse Impact Cross Hatch	No Adhesion Loss	No Adhesion Loss
Reverse Impact:	ASTM D2794 (NCCA II - 6) 80 inch-pound impact with a 5/8" steel ball or, = 2000 x decimal steel thickness in inches	No Adhesion Loss	No Adhesion Loss
ABUSE TOLERANCE			
Abrasion Resistance: Falling Sand Transit	ASTM D968, Liters to expose 5/32" area of substrate Based on topside to backer contact in transit after painting	30 Liters Per Mil of Film Acceptable	30 Liters Per Mil of Film Acceptable
Mortar Resistance:	AAMA ⁸ 605.2 (24 Hour Pat Test)	No Effect	No Effect
Detergent Resistance:	ASTM D2248 3% @ 100°F, 72 Hours	No Effect	No Effect
RESISTANCE TO CORROSION, CHEMICALS & POLLUTION			
Acid Pollutants:	Per ASTM D1308, Proc.6.2 :		
10% Muriatic Acid	24 Hours	No Effect	No Effect
20% Sulfuric Acid	24 Hours	No Effect	No Effect
70% Nitric Acid Vapors	AAMA 605.2, ASTM G87 (30 Minutes)	< 5 dE Color Change ⁵	< 5 dE Color Change ⁵
Kesternich Test	SO ₂ Cyclic Test, 2 Liters	10 cycles ⁵	10 cycles ⁵
Alkali Resistance: Sodium Hydroxide	ASTM D1308 10%, 25% (1 Hour)	Minimal Effect	Minimal Effect
Salt Fog:	ASTM B117 5% Salt Fog @ 95 °F	1000 Hours ⁴	3000 Hours ⁴
Humidity:	ASTM D2247 100% Relative Humidity @ 100 °F	1500 Hours ²	1500 Hours ²
WEATHERING PROPERTIES			
Accelerated Weathering:	ASTM D822, G152, G153 Weatherometer	2000 Hours	2000 Hours
	ASTM D2244 Color	< 5 dE Color Change ⁶	< 5 dE Color Change ⁶
	ASTM D4214 Chalk	Maximum #8	Maximum #8
EMMAQUA Testing:	Per ASTM D4141	Superior Results	Superior Results
Exterior Weathering :		Superior; Maximum	Superior; Maximum
Florida Exposure	ASTM D2244 Color	< 5 dE Color Change ⁶	< 5 dE Color Change ⁶
10 Years @ 45° South	ASTM D659 Chalk	Maximum #8	Maximum #8
Film Erosion	AAMA 605.2	Less than 20% film loss	Less than 20% film loss

1 American Society Testing and Materials

2 National Coil Coaters Association

3 Higher and lower glosses available upon request.

4 Less than 1/8" creep from scribe. No more than few #8 blisters.

5 No objectionable color change.

6 Hunter d (delta) E color difference units.

7 No more than few #8 blisters.

8 American Architectural Manufacturers Association

• CERAM-A-STAR® 1050 is a trademark of Akzo Nobel Coatings, Inc.



For more information contact: Akzo Nobel Coatings Inc. • 1313 Windsor Avenue
Columbus, OH 43216-0147 • (614)294-3361 • FAX (614)294-0436
www.akzonobel-ccna.com



CERAM-A-STAR® 1050 LIMITED WARRANTY

This limited warranty applies only to goods identified on an AKZO NOBEL Product Data Sheet as PRODUCT which are applied to metal after this document is signed by AKZO NOBEL and SUPPLIER, in accordance with parameters specified on the AKZO NOBEL Product Data Sheet within six months after shipment from AKZO NOBEL.

Although it is recognized by AKZO NOBEL and SUPPLIER that most coatings, including PRODUCT, will fade and change appearance to some degree over a period of time in outdoor installation, and that such changes may not be uniform between surfaces not equally exposed, AKZO NOBEL warrants that the PRODUCT covered by this warranty will conform to the performance standards listed below:

For forty (40) years, PRODUCT will not peel, flake, or otherwise lose adhesion to an extent that is apparent on ordinary outdoor visual observation. NOTE: Slight crazing or cracking may occur on roll-formed edges or break bends at the time of forming, and is considered as standard – such crazing or cracking shall not constitute a basis for complaint under this limited warranty; and

For thirty (30) years, sidewall panels of PRODUCT will not change color more than five (5) ΔE (delta E) Hunter units and roof panels will not change more than seven (7) ΔE (delta E) Hunter units when measured per ASTM D 2244 on clean surfaces after removing dirt, other surface deposits and chalk per ASTM D 3964; and

For thirty (30) years, sidewall panels of PRODUCT will not chalk more than a number eight (8) rating and roof panels will not chalk more than a number six (6) rating when measured per ASTM D 4214, Method A.

This is an anti-weathering limited warranty and does not apply to other causes of degradation, including:

PRODUCT which has suffered scratching or abrasion or has been damaged by abrasive or chemical cleaners; has been abused, altered, modified, used in a manner not originally intended, or stored contrary to recommendations of AKZO NOBEL, SUPPLIER, or the coil coater, or contrary to good industry practice; has been damaged due to moisture entrapment in coils and/or bundles during transit or storage; has been stored or installed in a way which allows standing water on the coating or in any chemically aggressive environment (containing such substances as fumes, ash, salts, dirt, grease, or high humidity); has been stored or installed in such a way that allows contact with animals and/or animal waste or its decomposition products; has suffered from improper forming, fabrication or embossing; corrosion of the substrate and/or corrosion at cut edges; or develops any other condition between the coating and the substrate which causes the coating to degrade or delaminate;

PRODUCT which is installed within 1000 meters (3250 feet) of salt water.

If AKZO NOBEL's PRODUCT fails to comply with our limited warranty, due to any defect in material or workmanship, AKZO NOBEL will bear the full cost of labor and material to replace or refinish the defective portion of the field installation. The decision whether to replace or refinish to remedy an honored claim will be made at the sole discretion of AKZO NOBEL. If AKZO NOBEL's investigation indicates that the claimed defect is not covered by this limited warranty, SUPPLIER shall reimburse all of AKZO NOBEL's third party expenses incurred in connection with the investigation of the claim. This warranty also applies to the part(s) being repainted, repaired or replaced, but only for the unexpired portion of the warranty period applicable to the original coat coated part.

THIS LIMITED WARRANTY IS EXCLUSIVE AND IS IN LIEU OF ANY WARRANTY OR MERCHANTABILITY, FITNESS FOR PARTICULAR PURPOSE, OR OTHER WARRANTY OR QUALITY, WHETHER EXPRESS OR IMPLIED, AND WHETHER WRITTEN OR ORAL. Correction of non-conformities in the manner and for the period of time provided herein shall constitute fulfillment of all liabilities of AKZO NOBEL to SUPPLIER with respect to or arising out of the goods whether based on contract, negligence, strict liability in tort, or otherwise.

AKZO NOBEL SHALL NOT, UNDER ANY CIRCUMSTANCES, BE LIABLE FOR SPECIAL OR CONSEQUENTIAL DAMAGES, such as, but not limited to, damage or loss of other property or equipment, loss of profits or revenue, cost of capital, cost of purchase or replacement of other goods, or claims of customers or Purchaser for business or service interruptions. THE REMEDIES OF SUPPLIER SET FORTH HERIN ARE EXCLUSIVE.

Some Restrictions May Apply. Contact Manufacturer for Details